



INSTALLATION GUIDE

Single Pointer Sign

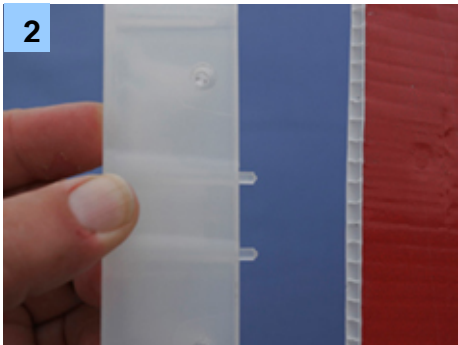
Page 1 of the installation guide explains how signAclips fit to flute board and how they fit to star pickets. Page 2 is the step by step instructions for installing a single pointer sign.

Helpful hint: When installing single pointer signs, ensure that the signAclip is installed at least 80mm from the top of your sign to ensure your sign sits higher than the top of the star picket.

How to fit signAclips to FLUTE BOARD



1 Positioning signAclips
Fit the signAclip at least 80mm from the top of your sign.

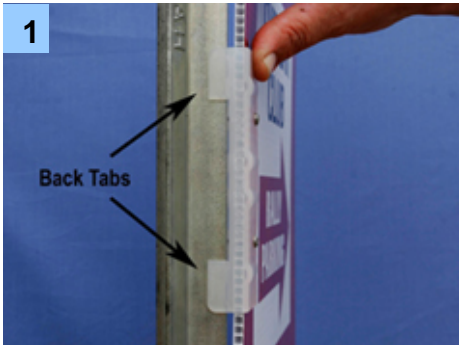


2 Fitting signAclips
Insert the 'prongs' of the signAclip into the flutes of the flute board and push the clip all the way onto your sign.



3 Securing signAclips
Secure the signAclip in place by inserting 2 x 6 gauge screws into the clip. Do not over tighten screws.

How to fit signAclips to STAR PICKETS



1 Fit the back tabs over the solid fins of the star picket.



2 Position the curved section of the signAclip against the fin with the predrilled holes



3 Slide the signAclip over a predrilled hole on the star picket and insert and tighten a single cable tie

Installing a Single Pointer sign



Fit the signAclip & sign to the star picket and rotate the star picket until you have obtained the 'correct sign' direction and therefore 'fin direction'.

Maintaining the star pickets correct 'fin direction' hammer the star picket into the ground as vertical as possible.



Refit the signAclip and position over a predrilled hole. Insert a cable through both the clip and the predrilled hole and tighten the cable tie to secure the sign to the star picket.

Congratulations – Your sign is now fully installed.

